

**RE-DISTRICTING
ANALYSIS FOR THE
PLAINFIELD
SCHOOL DISTRICT**

May 22, 2023



PURPOSE OF THE STUDY

- ❑ Perform district-wide re-districting of Plainfield elementary schools to relieve overcrowding, as well as to maximize the use of the new elementary school (Booker)
- ❑ Plainfield administration provided proposed boundaries of the new elementary school zones.
- ❑ Small revisions occurred to further reduce overcrowding and to increase enrollment at Booker.

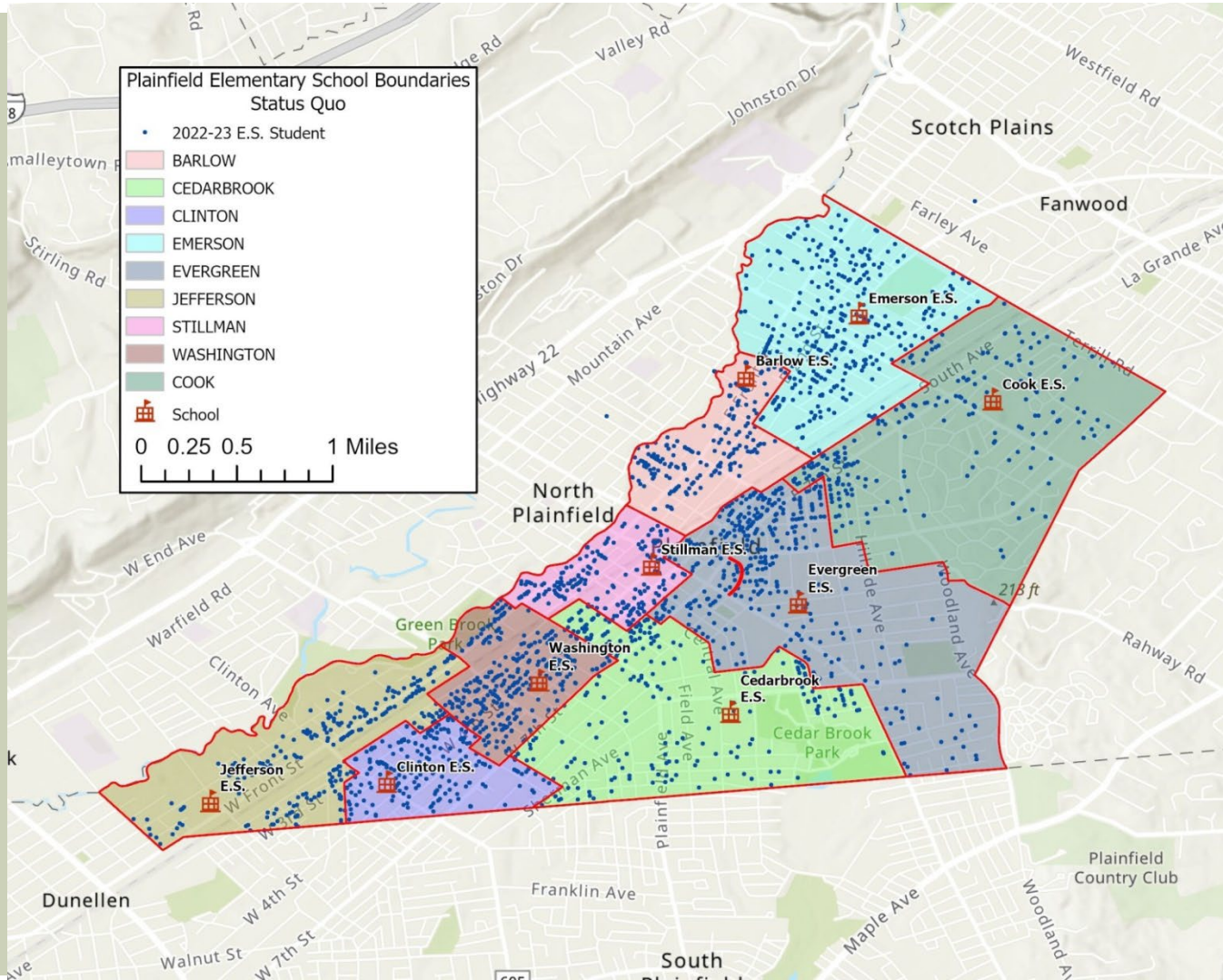
REDISTRICTING ANALYSIS

STUDENTS ATTENDING ZONED SCHOOL

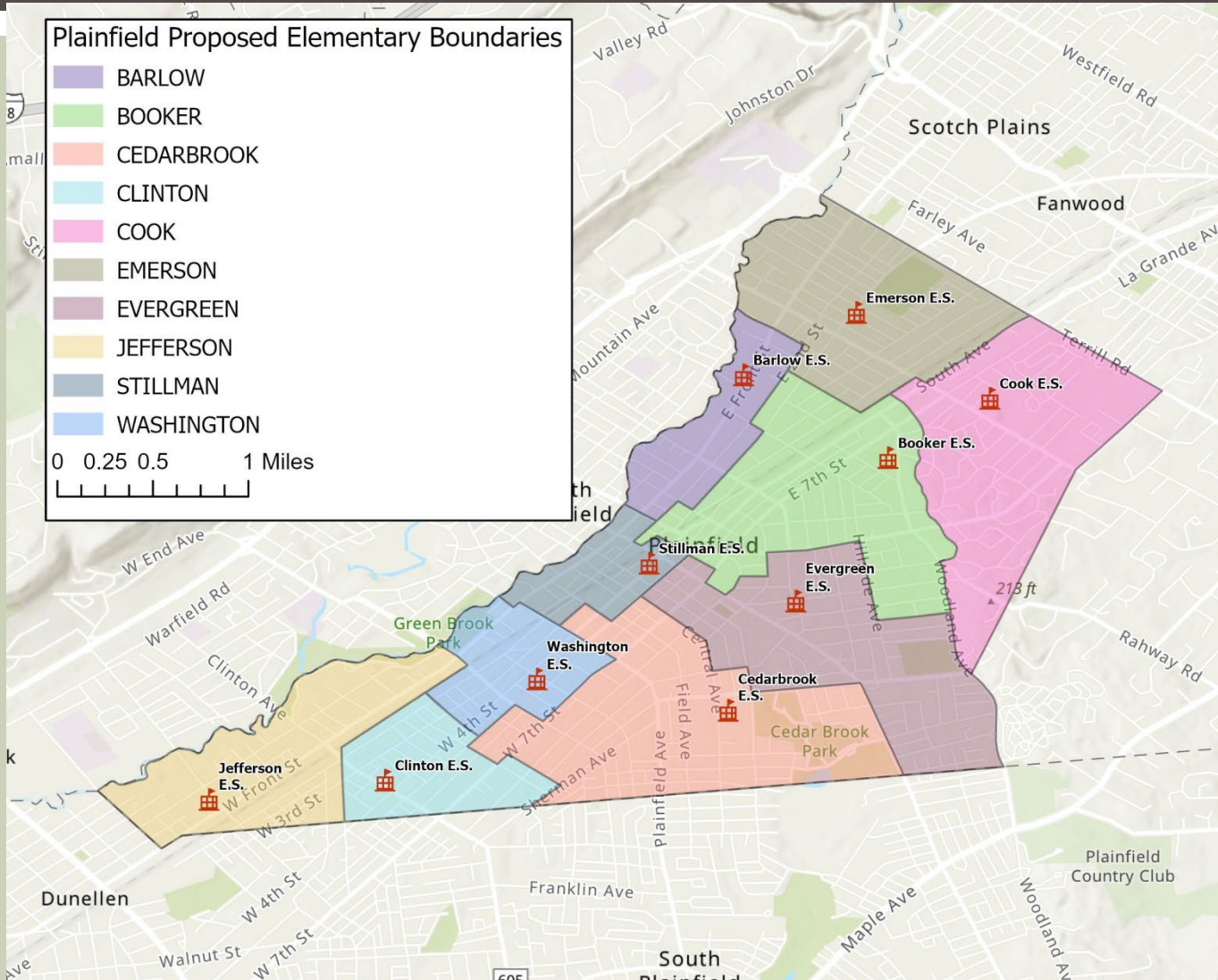
2022-23

School	Percent Attending Zoned School	Percent Not Attending Zoned School
Barlow E.S.(K-5)	77%	23%
Cedarbrook K-8 Center (K-8)	68%	32%
Clinton E.S. (K-5)	68%	32%
Cook E.S. (K-5)	78%	22%
Emerson E.S. (K-5)	79%	21%
Evergreen E.S. (K-5)	64%	36%
Jefferson E.S. (K-5)	78%	22%
Stillman E.S. (K-5)	56%	44%
Washington E.S. (K-5)	81%	19%

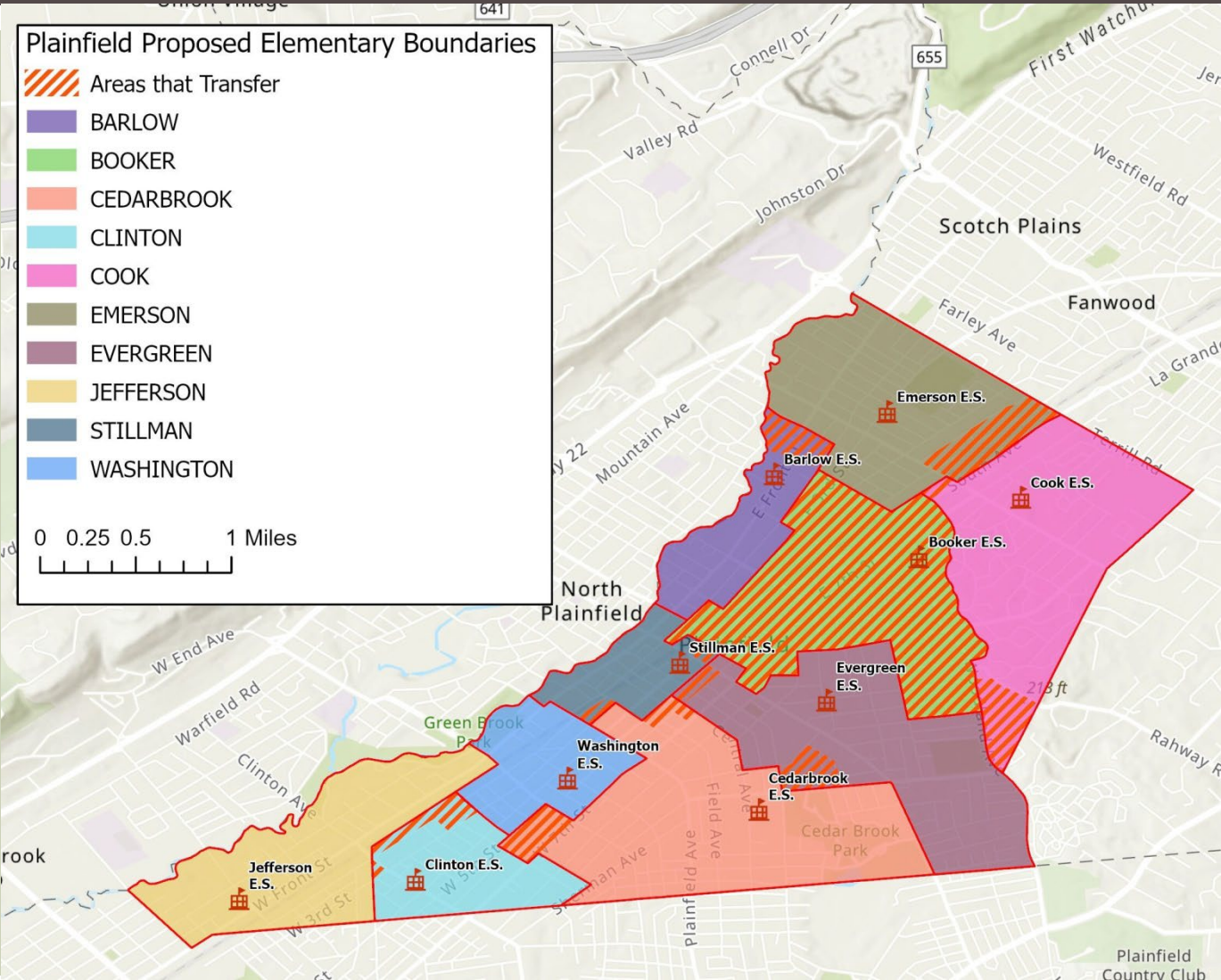
EXISTING BOUNDARIES WITH STUDENTS



PROPOSED NEW BOUNDARIES



AREAS CHANGING SCHOOLS



DISRUPTION FACTORS

School	Enrollment 2022-23	Proposed Scenario	
		Number Disrupted	Percent Disrupted
Barlow	417	19	4.6%
Cedarbrook	623	35	5.6%
Clinton	413	0	0.0%
Cook	389	177	45.5%
Emerson	509	124	24.4%
Evergreen	602	460	76.4%
Jefferson	441	34	7.7%
Stillman	354	93	26.3%
Washington	649	65	10.0%
Total	4,397	1,007	22.9%

ENROLLMENT PROJECTIONS

- Enrollments were projected for each elementary school from 2023-24 to 2027-28 based on new boundaries.
- Student addresses from 2018-19 to 2022-23 were “pin-mapped” or geocoded into ArcGIS.
- Tabulated number of students who would have resided in each new elementary zone in the last 5 years for the purpose of projecting enrollments using the Cohort-Survival Ratio method.
- Assumes that each student will attend their “home school” in the future.

ENROLLMENT TO CAPACITY COMPARISON

School	FES Capacity +10%	Status Quo		Proposed Scenario	
		Actual Enrollment 2022-23	Difference	Projected Enrollment 2027-28	Difference
Barlow	413	417	-4	453	-40
Booker	825	N/A	N/A	781	+44
Cedarbrook	518	623	-105	584	-66
Clinton	384	413	-29	370	+14
Cook	452	389	+63	202	+250
Emerson	440	509	-69	420	+20
Evergreen	495	602	-107	488	+7
Jefferson	431	441	-10	376	+55
Stillman	315	354	-39	335	-20
Washington	597	649	-52	585	+12



Any

Questions